



Addendum #1

RFQ #01-25/26

US 15 South Pump Station Replacement Project

Question – Is there room on the existing pump station site to build a new pump station, or did the City acquire a new site?

Answer – A new site is in the works of being acquired for the pump station. See attached map showing approximate location of new pump station and the existing pump station.

Question – Are there record drawings of the existing pump station, force main, and gravity sewer available?

Answer – Not to our knowledge but we will continue looking.

Question – Does the City have an outside consultant to assist with the application preparation and submittal?

Answer – Santee Lynches Council of Governments assisted with the grant application preparation. An engineering firm did not assist in the process.

Question – Is the grant application available for review?

Answer – The grant application will be available for review once an engineering firm is selected.

Question - Has the City already received the funding?

Answer – The City of Sumter has been awarded the grant funding, but it has not been received.

Question – Can the City clarify the RFQ response submittal requirements?

Answer – Please provide 4 physical color copies of the submittal and submit an electronic copy to the website.

Question – Has the City decided on the location for the new pump station? Has the city obtained the property needed for the project?

Answer – A new site is in the works of being acquired for the new pump station. See attached Figure 3 map showing approximate location of new pump station and the existing pump station.

Question – Is there a preliminary cost for the project?

Answer – No there is not.

Question – Is there any preliminary engineering report available for this project?

Answer – No, not currently.

Question - Is there information on current pumping capacity and expectations of new station design capacity, considering growth in the industrial park community it is currently serving?

Answer – The pump station to be replaced is located on US Highway 15 approximately 600 feet from the intersection of Pack Road and US Highway 15. The pump station was constructed in 1979 as part of a sewer line extension project to provide sewer service to a portion of the Live Oak Industrial Park. The pump station is a Gorman Rupp pump station and was designed to pump 250,000 gallons per day. The station is currently pumping approximately 150,000 gallons per day during the dry weather and approximately 200,000 gallons per day during rain events. We are anticipating the new pump station being able to handle a minimum of 400,000 gallons per day. A preliminary layout of the new pump station and associated sewer and force main lines are illustrated in Figure 4.

Question – Is the existing force main manifolded?

Answer – No

Question - Are any of the nearby industrial facilities considered to be within the pump station service area? If so, what type?

Answer – Yes, there are near by industries. All of this info can be discussed with the selected engineering firm.

Question - What is the project design capacity for this pump station and what is the basis for this projection?

Answer – The existing pump station is a Gorman Rupp pump station and was designed to pump 250,000 gallons per day. The station is currently pumping approximately 150,000 gallons per day during the dry weather and approximately 200,000 gallons per day during rain events. We are anticipating the new pump station being able to handle a minimum of 400,000 gallons per day. Originally a specific industry was in mind for the pump station upgrade but currently they are not in the picture. The pump station is being replaced because the existing pump station is approaching the end of its useful life, and we are enhancing our ability to attract new businesses.



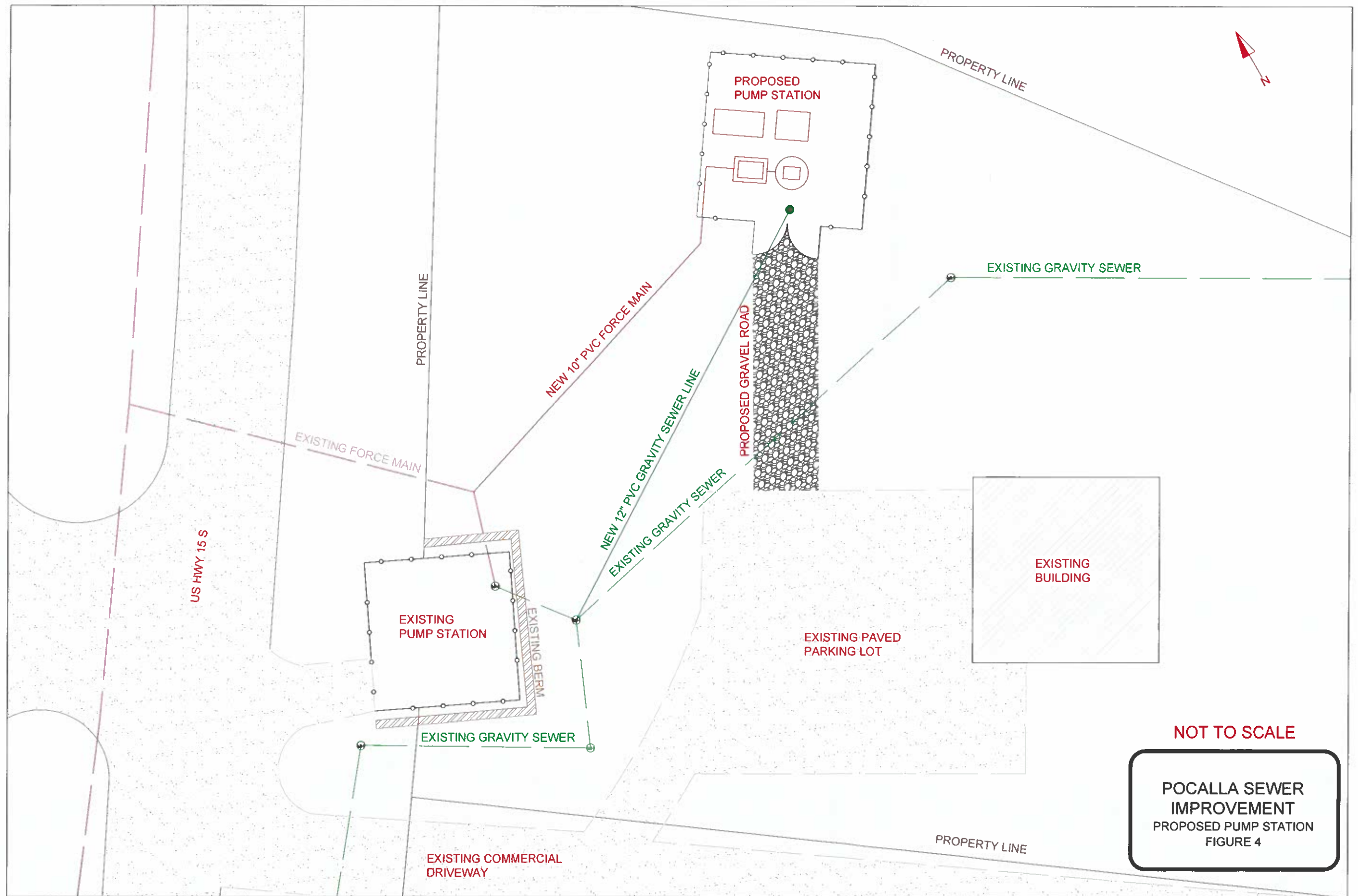
DISCLAIMER: MAPS AND DATA ARE TO BE USED FOR REFERENCE USE ONLY. THE DATA CONTAINED ON THE SUMTER GEOGRAPHIC INFORMATION SYSTEM (GIS) IS SUBJECT TO CONSTANT CHANGE. THE DATA ON THIS MAP IS AS IS WITHOUT WARRANTY OF ANY KIND, IMPLIED OR EXPRESS, AS TO THE INFORMATION BEING ACCURATE OR COMPLETE. WITH KNOWLEDGE OF THE FORGOING, BY PROCEEDING TO USE THIS DATA, EACH USER AGREES TO WAIVE, RELEASE AND INDEMNIFY SUMTER CITY, ITS AGENTS, CONSULTANTS, CONTRACTORS OR CITY EMPLOYEES FROM ANY AND ALL CLAIMS, ACTIONS, OR CAUSES OF ACTION FOR DAMAGES OR INJURY TO PERSONS OR PROPERTY ARISING FROM THE USE OF THIS INFORMATION.



- Sewer Manholes — Sewer Gravity Mains
- Sewer Lift Stations — Sewer Pressurized Mains

Pocalla Sewer System Improvement

Pump Station Relocation Map (Figure 3)



NOT TO SCALE

POCALLA SEWER
IMPROVEMENT
PROPOSED PUMP STATION
FIGURE 4