



## **ADDENDUM #1**

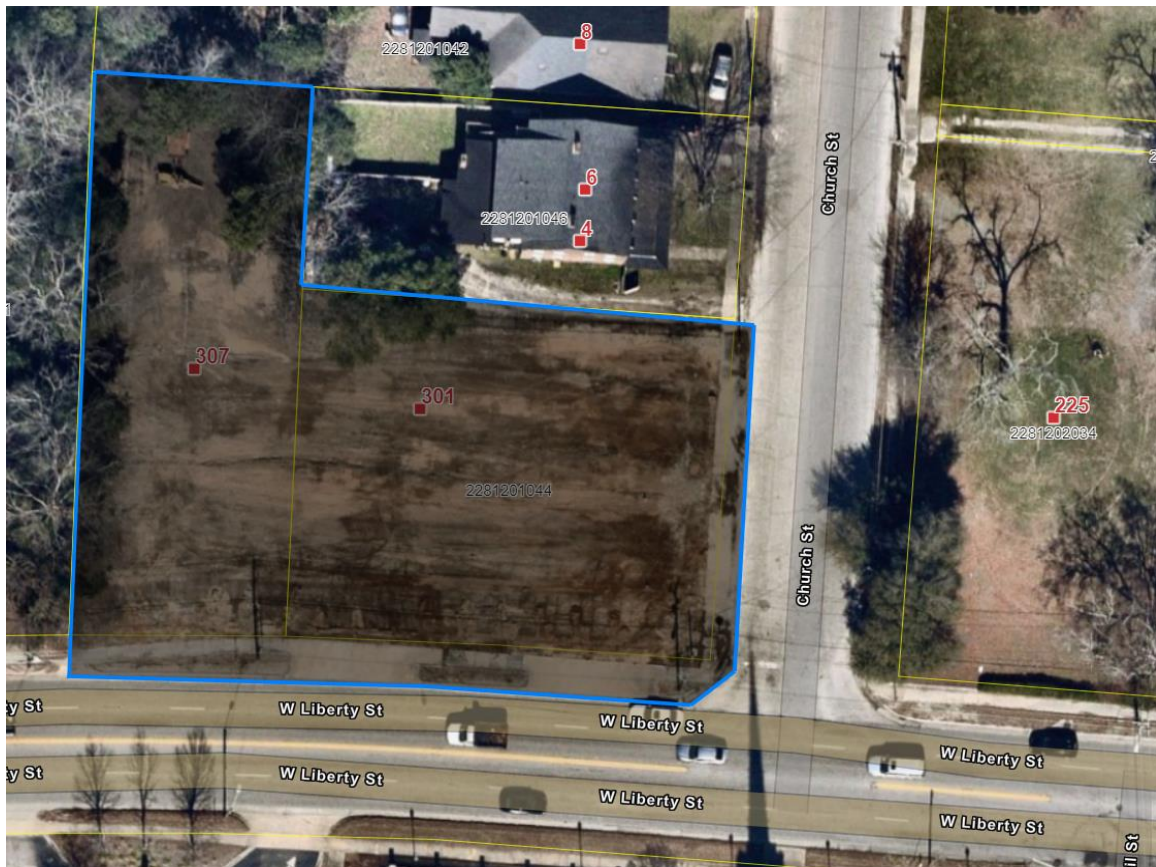
July 14, 2025

ITB #5-25/26: Gateway Turf and Landscape Maintenance  
and

ITB #6-25/26: Gateway Turf and Landscape Chemical Maintenance

### **1. ADD THE FOLLOWING LOCATION TO BOTH OF THE BIDS LISTED ABOVE AND INCLUDE PRICING IN THE TOTAL BID:**

The Liberty St. and Church St. Green Space, located at  
301 W. Liberty St., Sumter, SC 29150.





These areas will be included in the "Downtown" map, and all line items, including the alternates, shall apply. Please include this additional square footage into your quotes. The measured areas are:

19,200 SF of Bermuda

6,300 SF of Landscape beds – Double Hammered Hardwood Mulch

- For Clarification: ITB #5 | Line items 1-4 plus Alternate #1 will include the square footage added in this addendum.
- For Clarification: ITB #6 | All 11 line items plus alternate #1 will include the square footage added in this addendum.

**PLEASE SIGN AND INCLUDE THIS ADDENDUM WITH YOUR BID RETURNS.**

Prepared by: Anthony J. Butts, Jr., City of Sumter Procurement Agent

\*Remember, all questions are due in writing to Brock McDaniel  
([bmcdaniel@sumtersc.gov](mailto:bmcdaniel@sumtersc.gov)) NLT Wednesday, July 16, 2025 by 5:00 PM / ET.

Company Name: \_\_\_\_\_

Signature: \_\_\_\_\_